

# PARX RESIDENCY

ORERA: RP/26/2024/01250

<https://rera.odisha.gov.in/>



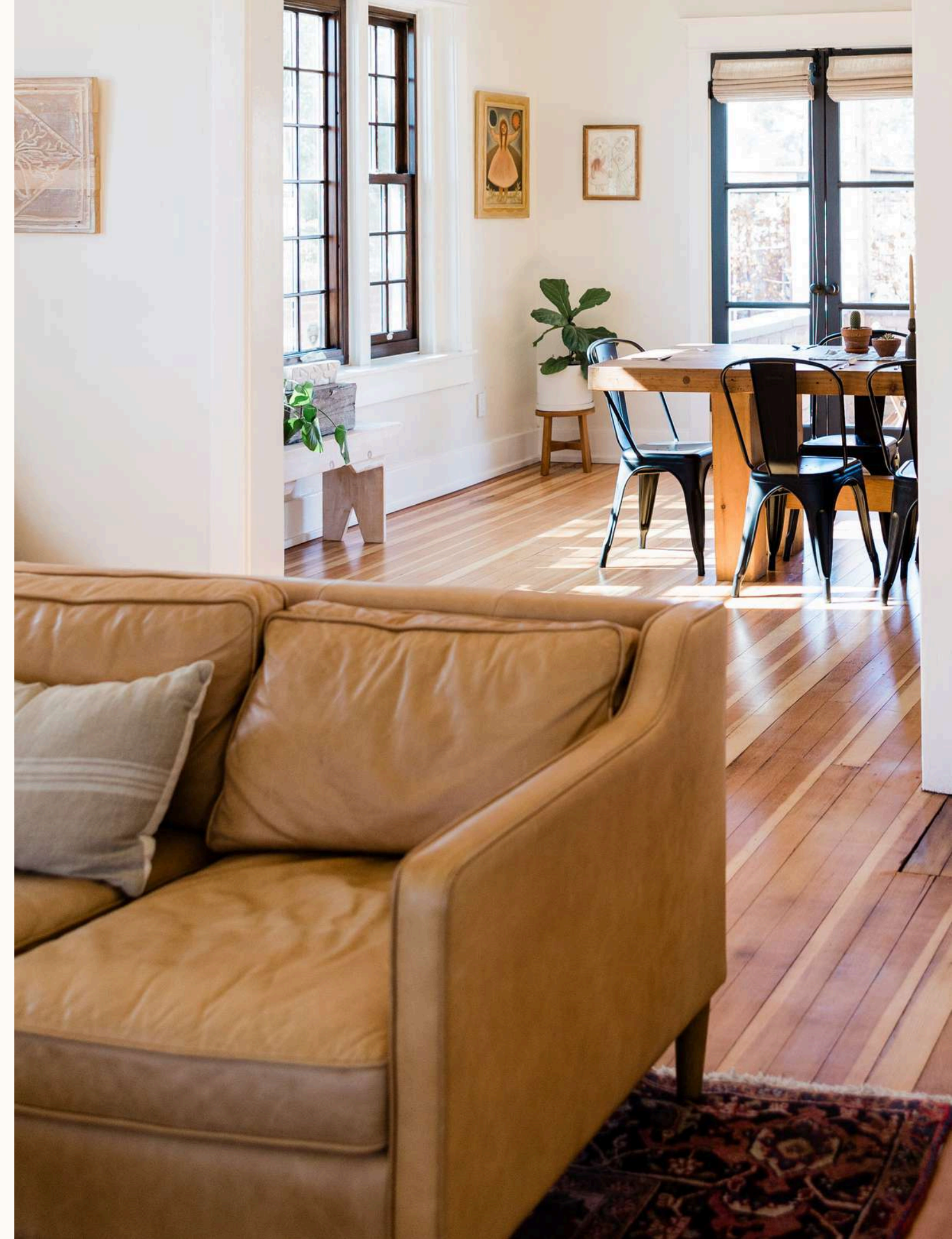
# City At A Glance

The capital city of Odisha - Bhubaneswar is the newest Indian city to have caught the fascination of India Inc's investment plans. One of the most compelling reasons for the growth of Real Estate In Bhubaneswar is without doubt because of the serene atmosphere and beautiful landscape. The Orissa government has welcomed the property investors with open arms, & is putting in best efforts to attract both national and foreign real estate investors. The government is further carrying out large scale infrastructural development in the state of Bhubaneswar to attract investments by realty hotshots. With more and more property investors showing interest in Property In Bhubaneswar, value property & land is skyrocketing. The IT sector in Bhubaneswar is among the fastest expanding fields. Reputed names & IT giants like TCS, Infosys and Wipro have a strong presence in the city. Residential Property In Bhubaneswar is also selling like hotcakes; residential projects are being lapped up by buyers who are not leaving behind any opportunity to be a part of real estate growth story in Bhubaneswar.



# About Us !

Sai Arati Homes Private Limited, a well-established real-estate firm with its registered office at Plot No-348, BJB NAGAR, LEWIS ROAD, Bhubaneswar, Odisha 751002 proudly presents a contemporary stilt-plus-five-storied residential complex. Backed by a decade of experience in the property sector, the promoters have blended modern design with functional living spaces to create a community of 59 thoughtfully laid-out apartments. Each unit is offered in spacious 2-BHK and 3-BHK configurations, catering to both young professionals and growing families who seek comfort, convenience, and a reputable builder's assurance in the heart of Odisha's capital.



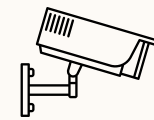


# What is Space ?

Our floor plan is centered around a generous, open-concept living area that becomes the heart of your daily routine. Bathed in natural light from floor-to-ceiling windows, the spacious room seamlessly blends a comfortable seating zone, a functional work-from-home nook, and a sleek entertainment corner, allowing you to relax, create, and socialize without ever feeling cramped.

# Know Your Ammenities

These are the things we provide and Lots More



CCTV



Solar Lights



Intercom



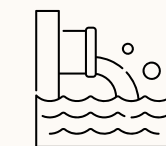
Visitor's Parking



Gym and Yoga



Roof Top Activites



STP

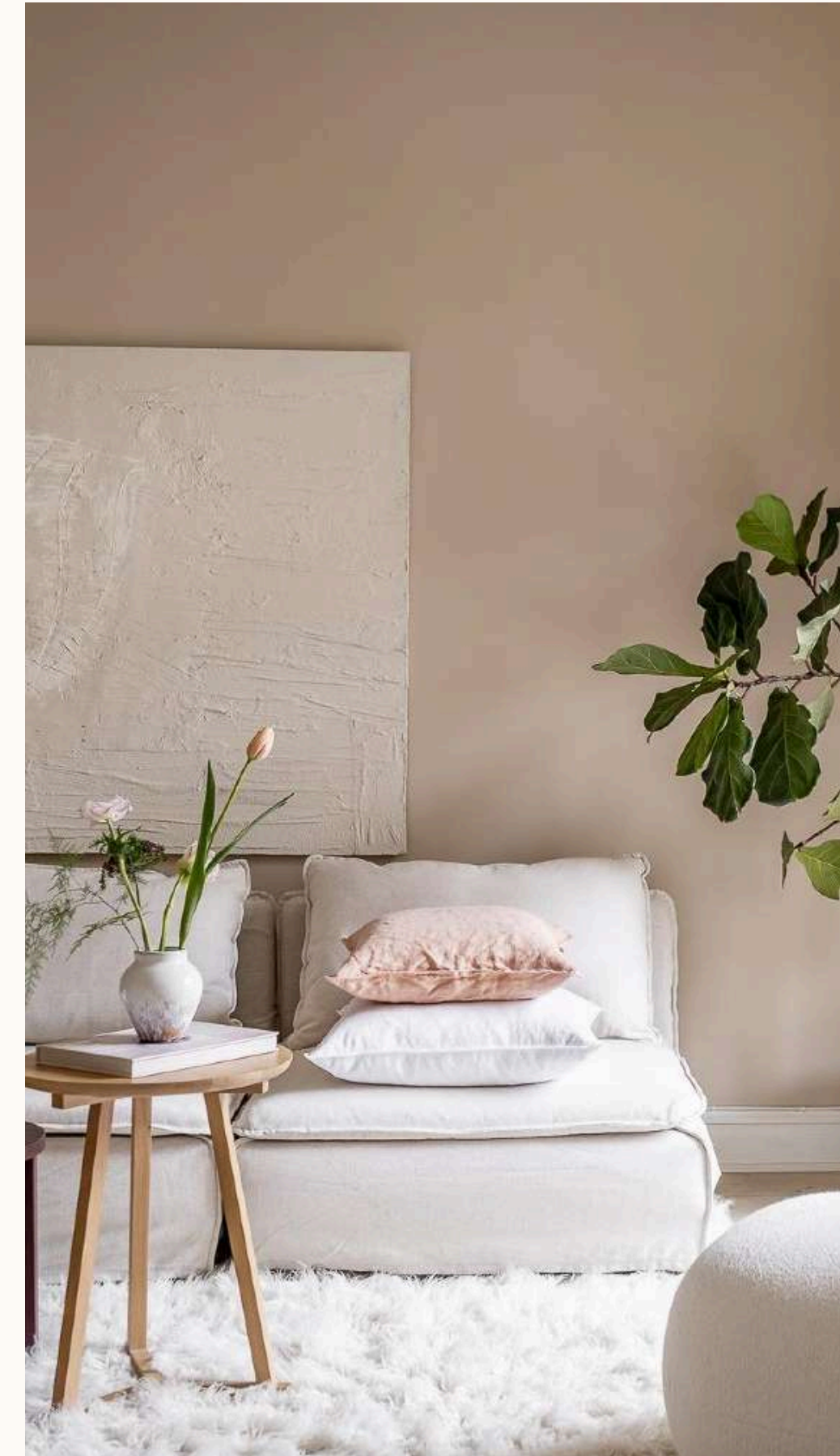


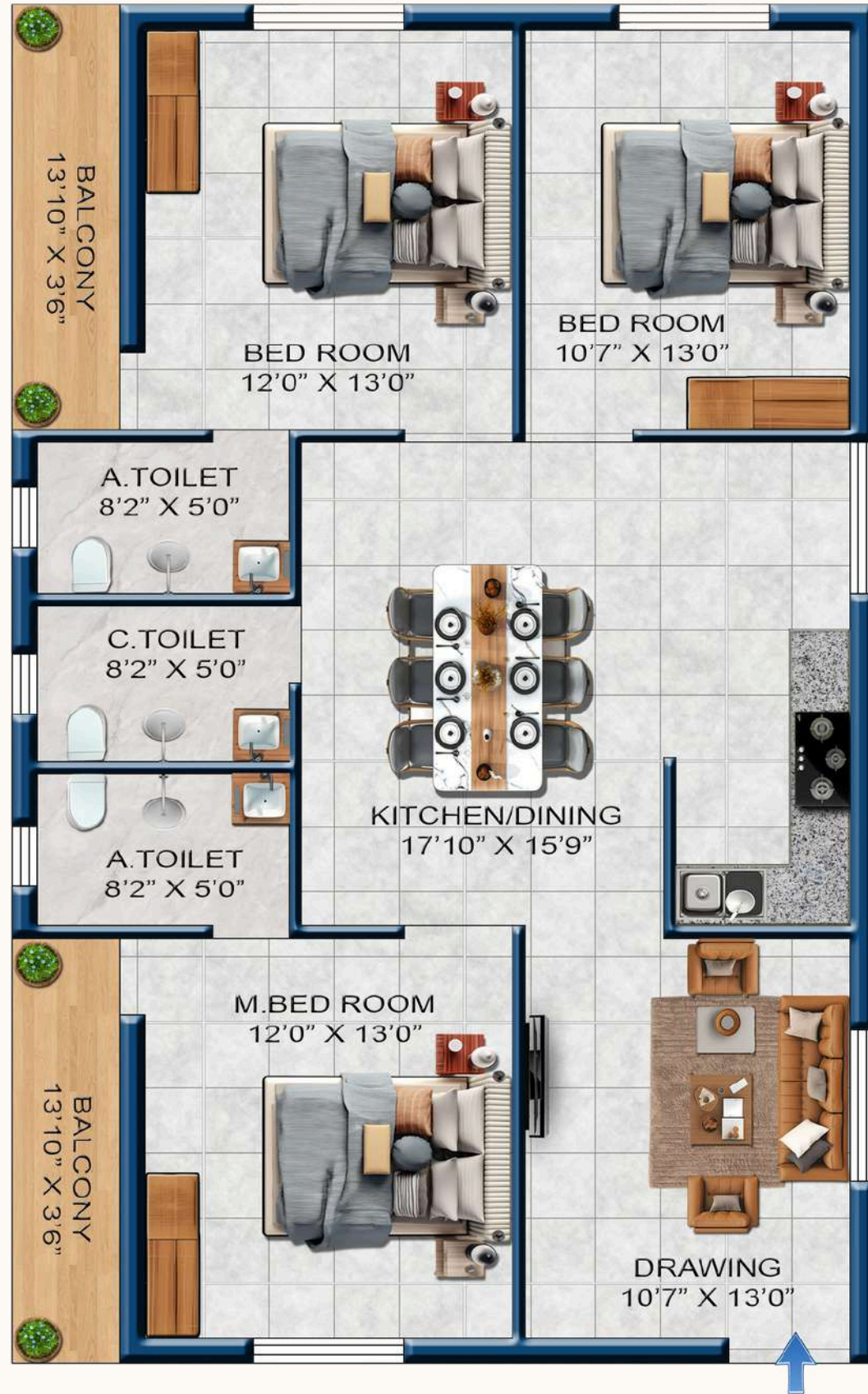
EV Charging



# The Specification

Structure: M-25 RCC Frame Structure  
Cement: Ultratech, ACC or Equivalent  
Steel : TATA, Vizag, Jindal or Equivalent  
Slab : 5" Thickness Slab  
Bricks : Fly Ash Bricks  
Flooring : 600mm x 600mm vitrified floor tiles in bedroom, dinning cum living, kitchen and Granite to the staircase and corridor and Antiskid tiles on bathroom and balcony.  
Kitchen: Granite platform with high grade SS Sink basin and 2' height ceramic tiles above the platform  
Main Door: Tick wood with polish  
Internal Door: Flush Door and PVC door on bathroom  
Windows : UPVC double slide window with MS grill  
CP & Sanitary: Jaguar & Marks  
Door Fitting: Godrej, Quba, Dorset  
Electrical: Havells, Finolex, Legrands or Equivalent  
PVC Pipe: Suprime, Astral, Ori-Plast, Hari-Plast  
Wall Putty: Birla, JK or Asian





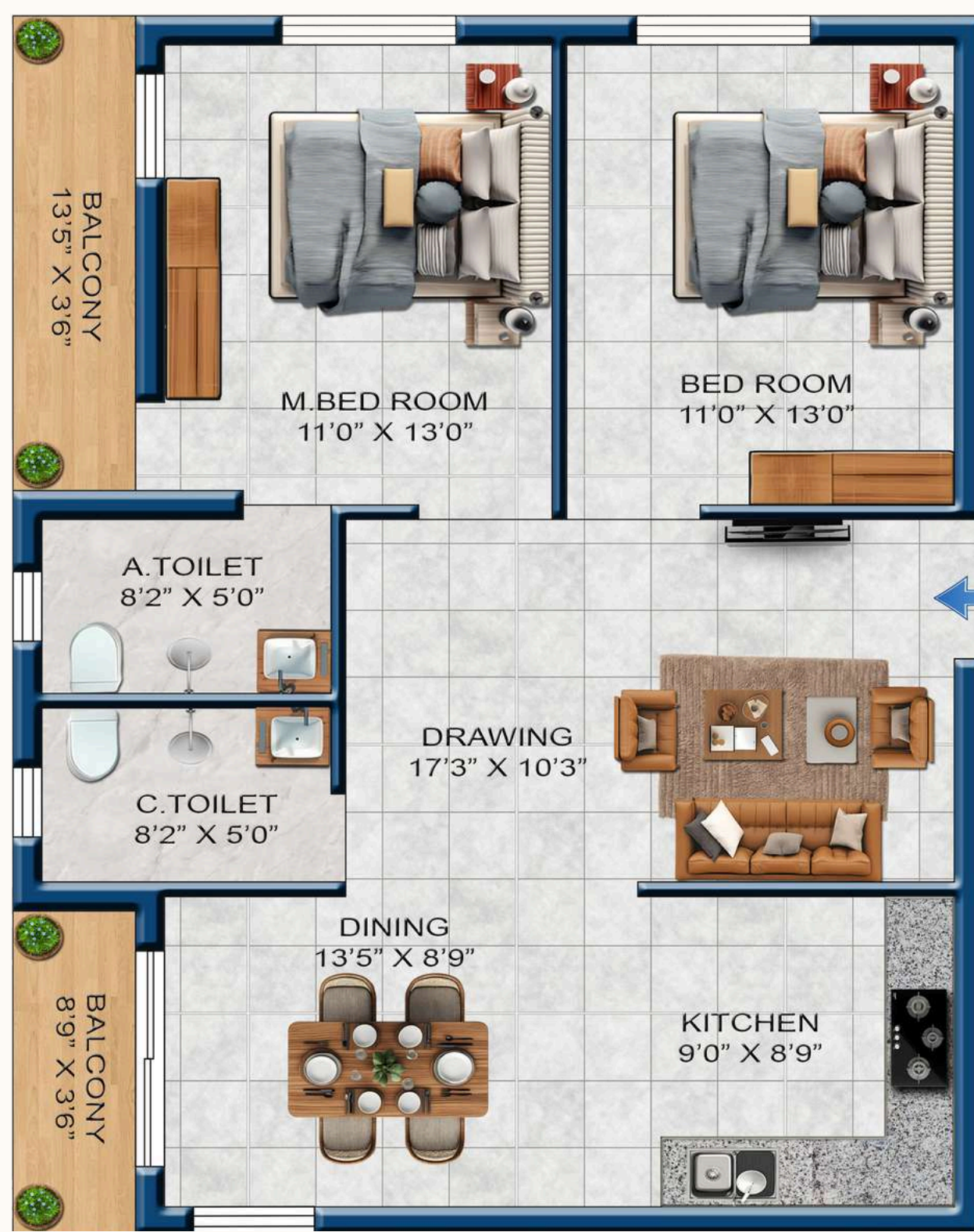
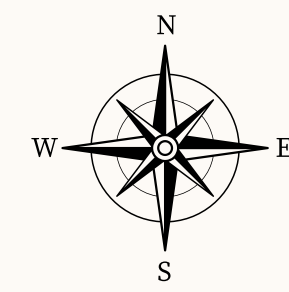
Carpet - 1130 sqft  
 Super Built Up - 1820 sqft



3 BHK FLOOR PLAN



Carpet - 1185 sqft  
 Super Built Up - 1850 sqft



2 BHK FLOOR PLAN



Carpet - 558 sqft  
Super Built Up - 1000 sqft

Carpet - 854 sqft  
Super Built Up - 1450 sqft



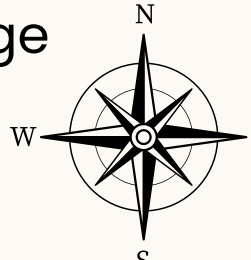
# Entertaining

Our apartment complex boasts a sweeping, open-air terrace that transforms everyday living into a vibrant, health-focused experience. Bathed in fresh breezes and panoramic city views, the space is equipped with a dedicated yoga deck and a fully-fitted gym area where residents can stretch, strengthen, and find their rhythm under the sky. Nearby, a relaxed lounge invites neighbors to share stories and laughter over coffee, while a tranquil meditation nook—lined with soft, shaded planting—offers a quiet retreat for mindful reflection. When the sun begins to set, the built-in barbecue stations come alive, encouraging communal cookouts and festive gatherings that turn ordinary evenings into memorable celebrations. In short, the terrace seamlessly blends wellness, social connection, and leisure, delivering a truly elevated lifestyle right at home.



# Why Parx !!

Our promise is simple yet profound: we are devoted to delivering not merely a structure, but a sanctuary that embodies the highest standards of quality for our cherished clients. Every ounce of effort poured into this project is guided by the conviction that a home is far more than walls and a roof—it is the fertile ground where memories are planted, dreams take shape, and lives unfold. We meticulously select materials, fine-tune every detail, and infuse thoughtful design so that when we hand over the keys, we hand over a lived-in experience, a place where comfort meets elegance and where families can write the first chapters of their stories. After all, every great story begins at home, and we are committed to making that opening page unforgettable.





PARK  
RESIDENCY

PARK  
RESIDENCY

Disclaimer: The contents of the brochure do not constitute a legal binding offer. All services, infrastructure, product and designs presented or described herein are subjected to variation and change at the sole discretion of Sai Arati Homes Private Limited until commissioning thereof or completion of the project named and style as "PARX RESIDENCY" or any part of phase thereof. The visual and information contained herein marked as "artistic impression" are indicative in nature and are also for general information purpose only. The visuals contained are general images and do not have any correlation with the project. The computer-generated images and render images are the artist's impression and are indicative of the actual design of proposed development in different phases. The designs, dimensions, facilities, plans, specifications, furniture, accessories and other details shown in the images are only indicative in nature and are only for the purpose of illustrating/indicating a possible layout and do not necessarily form part of the standard specifications/amenities/ services to be provided in the apartment. Recipients are advised to use their discretion in relying on the information/amenities described / shown therein. All specifications of the apartment shall be as per the final agreement between the Parties. No information given in this Brochure creates a warranty expand the scope of any warranty that cannot be disclaimed under the applicable laws. The information in this brochure is presented as general information. Nothing in the brochure should be misconstrued as advertising, marketing, booking, selling or an offer for sale or invitation to purchase a unit in any project by Sai Arati Homes Private Limited. While enough care is taken by the Company to ensure that information in the brochure are up to date, accurate and correct, any interested party should verify all the information including designs, plans, specifications, facilities, features, payment schedules, terms of sales etc. independently with Sai Arati Homes Private Limited prior to concluding any decision for buying in the project. Sai Arati Homes Private Limited is not responsible for the consequences of any action taken by the recipients relying on such material/ information on this brochure without independently verifying with the Sai Arati Homes Private Limited. The sale is subject to terms of application form and agreement for sale. All specifications of the apartment and the project shall be as per the final agreement between the parties. This Brochure is subject to such amendments as may be deemed necessary by Sai Arati Homes Private Limited. Sai Arati Homes Private Limited shall be under no obligation to inform of the amendments to the brochure. By using or accessing this Brochure, the recipients agree with the Disclaimer without any qualification or limitation.

# Location Map

Towards Puri



- ### Distance From Project
- KEC College : 0 K.M.
  - Municipal Hospital : 4.5 K.M.
  - CIFA : 00 K.M.
  - Sai Temple : 1 K.M.
  - Railway Station : 8 K.M.
  - Uttara Chhaka : 0.5 K.M.
  - Airport : 7.5 K.M.

- KEC College
- CIFA



Uttara Chhak

Promoter

**Sai Arati**  
Homes Pvt. Ltd.

PLOT NO-348, BJB NAGAR,  
LEWIS ROAD, BHUBANESWAR,  
ODISHA 751002

**WE ARE WAITING TO WELCOME YOU**